

---

# Class of 2012-2013 School Profile

CEEB/ACT Code 070100

---

## School Officials

---

Jeff Solan, *Principal*  
*jsolan@cheshire.k12.ct.us*  
Maureen Reed, *Assistant Principal*  
*mreed@cheshire.k12.ct.us*  
Richard Sansoucy, *Assistant Principal*  
*rsansoucy@cheshire.k12.ct.us*  
Laurie Vicario, *Assistant Principal*  
*lvicario@cheshire.k12.ct.us*

---

## School Counseling Staff

---

### Counselors

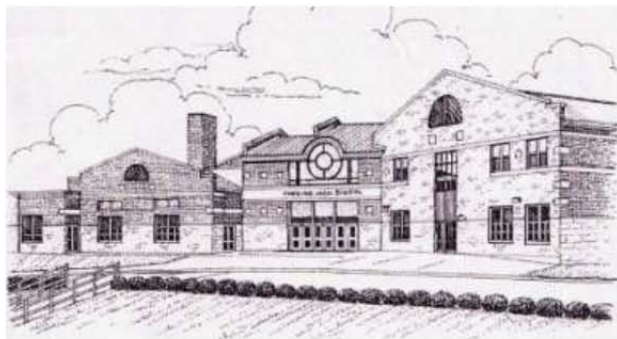
Vanessa Montorsi, *Chairperson*  
*vmontorsi@cheshire.k12.ct.us*  
Bonnie McDonald  
*bmcDonald@cheshire.k12.ct.us*  
Gregory Ferry  
*gferry@cheshire.k12.ct.us*  
Miranda Wheeler  
*mwheeler@cheshire.k12.ct.us*

Marc Dalke  
*mdalke@cheshire.k12.ct.us*  
Michelle Piazza  
*mpiazza@cheshire.k12.ct.us*

### Administrative Assistants

Regina Skurja  
*rskurja@cheshire.k12.ct.us*  
Roxsolana Gordon  
*rgordon@cheshire.k12.ct.us*  
Kathy Rooney  
*krooney@cheshire.k12.ct.us*

Susan Generous, *Career Assistant*  
*sgenerous@cheshire.k12.ct.us*  
MaryBeth McCloskey  
*mmcCloskey@cheshire.k12.ct.us*



# Cheshire High School

---

525 South Main Street  
Cheshire, Connecticut 06410  
Guidance Phone - (203) 250-2556  
Guidance Fax - (203) 250-2573

---

“The  
mission of the  
Cheshire High  
School  
community is  
the enhancement  
of student  
understanding.”

# Cheshire Rams



## Graduation Requirements

22 credits to graduate  
 4 credits in English  
 3 credits in mathematics  
 3 credits in science  
 3 credits in social studies (includes Civics and US History)  
 2 credits in fine/vocational arts  
 2 credits in physical education/health  
 5 applied credits

## Grade Information

A+ 97-100	B+ 87-89	C+ 77-79	D+ 67-69
A 93-96	B 83-86	C 73-76	D 63-66
A- 90-92	B- 80-82	C- 70-72	D- 60-62
F <60	I INC	N Loss of Credit	

## Curriculum

Advanced Placement, Competitive College Prep and College Prep level courses are offered in English, Fine Arts, Science, Mathematics, Social Studies and World Languages. Students are advised as to the most appropriate course levels on the basis of achievement and teacher/counselor recommendations.

## University of Connecticut Early College Experience

AP Biology	AP European History
AP French	AP Physics B
AP Physics C	AP Spanish
British Literature	
Human Growth and Development	
Child Development	

## Special Information

- Designated as one of the top 100 small towns in the United States by *Money Magazine* (#73).
- 93% of students are enrolled in college prep classes
- 87% of students take the SAT
- 30 athletic programs, 26 different clubs and many other activities are offered to students
- 93% participate in at least 1 extra curricular activity
- Over 300 juniors and seniors participated in a Job Shadow program sponsored by the CHS School Counseling Department and the Cheshire School Business Partnership
- The Cheshire Music Program has been designated as one of the top 100 in the United States

## Community, School and Town

Cheshire High School is located in Cheshire, Connecticut, fifteen miles north of New Haven, and twenty-five miles south of Hartford. Cheshire is a residential community located in New Haven County with a population of 29,187. Cheshire is easily accessible from Interstates 84, 91, and 691 and state routes 70, 68, and 10. The town has a land area of 33 square miles and is bounded on the north by Southington and Wolcott, on the east by Meriden and Wallingford, on the south by Hamden, and on the west by Prospect and Waterbury. Cheshire is a family-oriented community that supports an excellent school system. Historic homes blend with newer tree-lined neighborhoods. In fact, Cheshire has been designated the "Bedding Plant Capital of Connecticut" by the Connecticut General Assembly because of its abundance of bedding plant growers. During the past 50 years, the Town has become a residential suburban community. Despite significant industrial and commercial growth, Cheshire retains its rural characteristics with thousands of acres of open space and an active agricultural industry. Cheshire High School is a comprehensive high school serving approximately 1,600 students and their families. As a comprehensive high school, CHS offers a range of programs to meet the academic and personal needs of the students. CHS and the community are committed to working together to prepare students to become productive adults. The mission of the Cheshire High School learning community is the enhancement of student understanding. This understanding is pursued to enable all students to become complex adult thinkers, workers, and community contributors.

## Advanced Placement Courses

Biology	English Literature	Latin Vergil	Spanish Language
Calculus AB	Environmental Science	Music Theory	Studio Art
Calculus BC	European History	Physics B	Statistics
Chemistry	French Language	Physics C: Mechanics	U.S. Gov. & Politics
English Language	German Language	Psychology	U.S. History

Summary of Current Year's Grades  
 280 students sat for 439 exams in 20 subjects. 91% achieved a score of 3 or higher.  
 % 3 or better

Test	5	4	3	2	1	better
Biology	8	0	3	1	1	91
Calculus AB	15	0	1	0	1	100
Calculus BC	10	1	2	0	0	100
Chemistry	10	5	5	2	2	89
English Language	24	30	19	2	0	97
English Literature	9	11	6	3	0	90
Environmental Science	2	3	0	2	0	71
European History	2	2	6	2	3	100
French Language	0	0	0	0	0	N/A
German Language	1	1	1	2	2	43
Latin Vergil	1	0	2	0	0	100
Music Theory	0	2	0	0	0	100
Physics B	1	4	3	2	0	80
Physics C: Mechanics	11	3	0	0	0	100
Psychology	46	22	10	1	0	99
Spanish Language	2	1	4	1	0	88
Studio Art	2	2	3	0	0	100
Statistics	2	7	5	0	0	100
U.S. Gov. & Politics	9	12	15	4	2	86
U.S. History	17	27	18	7	0	90

## AP Scholar Information

8 National AP Scholars  
 28 AP Scholars with Distinction  
 22 AP Scholars with Honors  
 24 AP Scholars

## Class of 2012

2012 Graduates: 398

### Graduation Plans

4-year colleges	83	%
Vocational/Proprietary	2	%
2-year colleges	9	%
Seeking employment	1	%
Military	1	%
Undecided	2	%
Other	2	%

## 2012 College Board Summary

### SAT I Scores (Mean)

367 students took the test (88% of total class)

	Cheshire	Connecticut	National
Critical Reading	545	506	496
Math	566	512	514
Writing	541	510	488

### SAT I Score Distribution

Range	CR	Math	Writing
700-800	27	35	27
600-699	86	108	73
500-599	137	146	141
400-499	99	62	104
300-399	16	14	18
200-299	2	2	4

### SAT II Score Distribution

Test	Number	Mean
Literature	39	655
US History	35	693
Math 1	39	647
Math 2	33	686
Biology-E	3	N/A
Biology-M	5	N/A
Chemistry	31	673
Physcs	13	692
Chinese (L)	1	N/A
French	1	N/A
French (L)	1	N/A
German	2	N/A
Latin	6	663
Spanish	7	544
Spanish (L)	1	N/A

## National Merit Scholarship Program

	Finalists	Semi-Finalists	Commended Students
Class of 2012	2	4	12
Class of 2011	3	3	5
Class of 2010	5	5	9

## Class of 2012

### GPA Information

Cheshire High School does not rank students. A weighted GPA is provided. The GPA is based on final grades in all subjects including physical and health education. Our standard scale ranges from 0 to 4.33. The point values are based on the course level and final grade received.

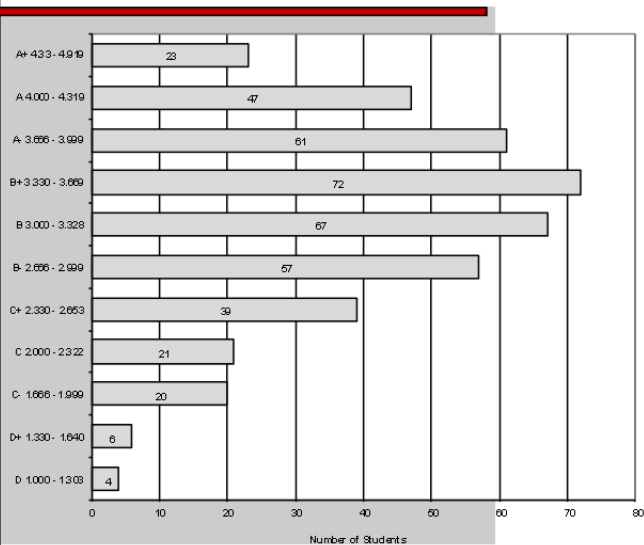
### Course level Information

AP-Advanced Placement  
 CCP-Competitive College Prep  
 CP-College Prep  
 L0- Unleveled

### GPA Quality Point/ Level Scale

Mark	AP	CCP	CP, L0
A+	5.33	4.83	4.33
A	5.00	4.50	4.00
A-	4.66	4.16	3.66
B+	4.33	3.83	3.33
B	4.00	3.50	3.00
B-	3.66	3.16	2.66
C+	3.33	2.83	2.33
C	3.00	2.50	2.00
C-	2.66	2.16	1.66
D+	2.33	1.83	1.33
D	2.00	1.50	1.00
D-	1.66	1.16	0.66

### Class of 2012 (413 students) 6th Semester GPA Distribution



## Colleges Attended by Cheshire High School Class of 2012 Graduates

Academy of Art University	Lesley University	State College of Florida,
Albertus Magnus College	Lincoln College of New England	Manatee Sarasota
American University	Lincoln Technical Institute	Stetson University
Amherst College	Lyndon State College	Stonehill College
Assumption College	Manatee Community College	Stony Brook University
Auburn University	Marist College	Suffield Academy
Bentley University	Massachusetts Coll. of Art & Design	Suffolk University
Boston College	Massachusetts College of	Syracuse University
Boston University	Pharmacy & Health Sciences	Trinity College
Brown University	Merrimack College	Tufts University
Bryant University	Miami Lakes Educational Center	Tulane University
California Institute of Technology	Middlebury College	Tunxis Community College
Central Connecticut State Un.	Middlesex Community College	University of Massachusetts at
Champlain College	Monmouth University	Amherst
Clark University	Moravian College	Union College
Colby College	Naugatuck Valley Comm. Coll.	United States Military Academy
Colgate University	North Haven Academy Paul	University of California – Berkeley
College of Charleston	Mitchell School	University of California – Riverside
College of the Holy Cross	Northeastern University	University of Connecticut
College of William & Mary	Nova Southeastern University	(Storrs, Waterbury, Avery Point)
Connecticut College	Pace University	University of Delaware
Cornell University	Paier College of Art	University of Denver
Curry College	Pennsylvania State University	University of Hartford
Eastern Connecticut State Un.	Philadelphia University	University of Kentucky
Eastern University	Princeton University	University of Maine
Embry-Riddle Aeronautical Un.	Providence College	University of New Hampshire
Emerson College	Purdue University	University of New Haven
Emmanuel College	Quinnipiac University	University of Pittsburgh
Endicott College	Regent University	University of Rhode Island
Fairfield University	Rochester Institute of Technology	University of Saint Joseph
Flagler College	Roger Williams University	University of Texas at Austin
Fordham University	Sacred Heart University	University of Toronto
Franciscan University of Steubenville	Saint Anselm College	University of Vermont
Franklin Pierce College	Seton Hall University	University of Virginia
Full Sail Real World Education	Siena College	University of Wisconsin-
Gateway Community College	Simmons College	Milwaukee
Georgetown University	Smith College	Wentworth Institute of Technology
Georgia Institute of Technology	Southern Connecticut State Un.	West Virginia University
Gettysburg College	Smith College	Western Connecticut State Un.
Indiana University of Penn.	Southern Connecticut State Un.	Western New England Un.
Johnson & Wales – Charlotte	Springfield College	Wheelock College
Keene State College	St. John Fisher College	William Woods University
Hofstra University	St. Michael's College	Worcester Academy
Lasell College		Xavier University
		Yale University